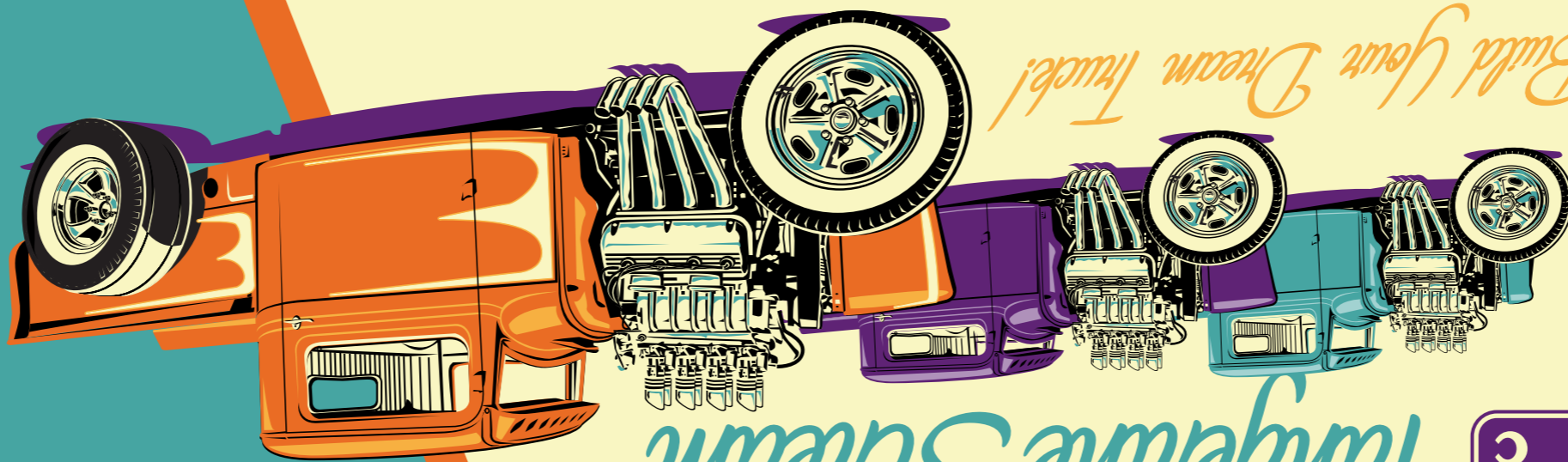


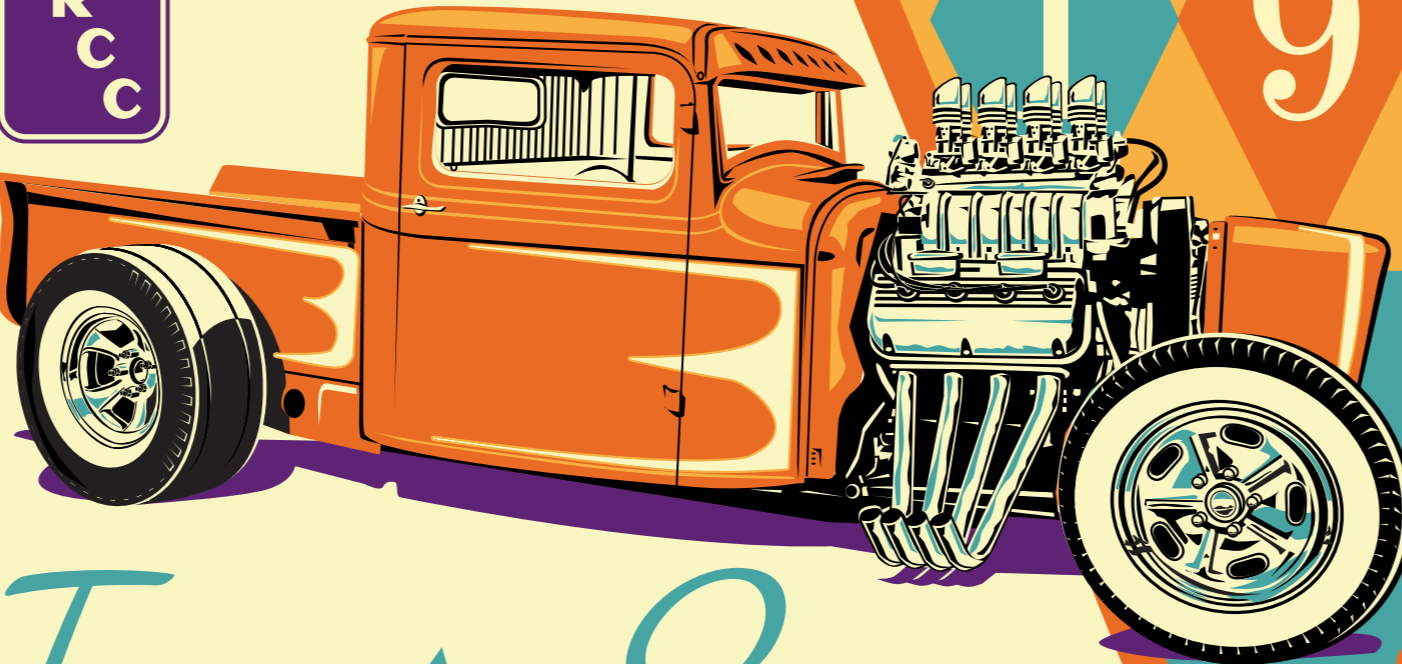
BLOWN HEMI! METALFLAKE PAINT! SHOW-ROD STYLING! 8 CARBS! WHITEWALL SLICKS!



Build Your Dream Truck!

Tangerine Scream

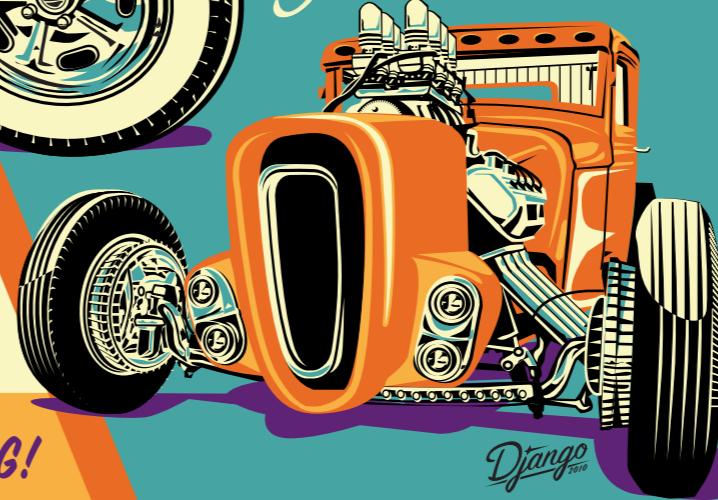
3-in-1 Customizer



1 9 3 3

3-in-1 Customizer

Tangerine Scream



Django

BLOWN HEMI! METALFLAKE PAINT! SHOW-ROD STYLING!



1 9 3 3



3-in-1 Customizer

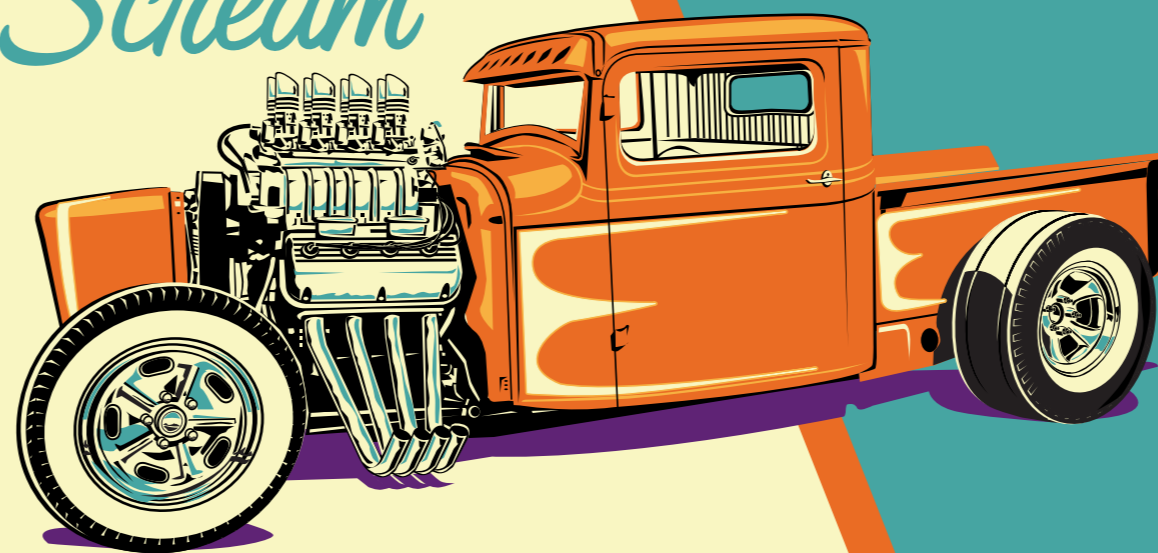
Tangerine Scream

Brought to you by Hot Rod Chassis & Cycle!



Tangerine Scream

3-in-1 Customizer



ENGINE: SUPERCHARGED CHRYSLER 392 HEMI
TRANSMISSION: TTC TKO 600 5-SPEED
REAR END: 9" REAR AXLE
FRONT SUSPENSION: 4" DROPPED & DRILLED I-BEAM
REAR SUSPENSION: HRCC
FRAME: HRCC FRAME
BODY MODIFICATIONS: HAND CRAFTED STEEL
GRILLE SHELL, CHOPPED 5 INCHES,
HAND CRAFTED TRUCK BED, 10.00-15 RADIR SLICKS,
5.60-15 COKER FIRESTONE PIE CRUSTS

BLOWN HEMI! METALFLAKE PAINT! SHOW-ROD STYLING! 8 CARBS! WHITEWALL SLICKS!

- TRADITIONAL HOT RODS
- '50'S ERA BOBBERS
- TRADITIONAL CUSTOMS
- DRAGSTERS
- CUSTOM SHEETMETAL WORK
- CUSTOM FABRICATION



IF YOU CAN DREAM IT,
WE CAN BUILD IT.

WWW.HOTRODCHASSISANDCYCLE.COM 630.458.0808

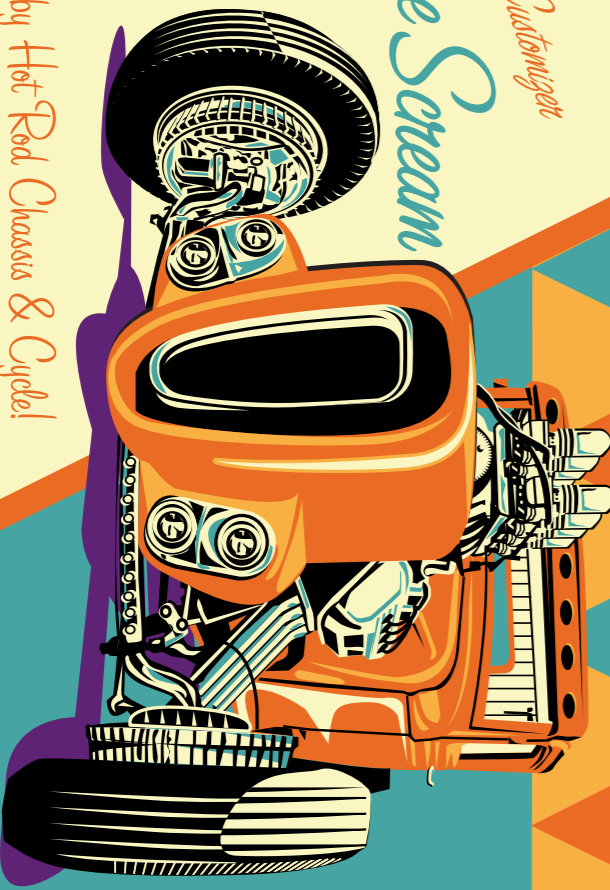
59 FACTORY ROAD, ADDISON, IL 60101

Brought to you by Hot Rod Chassis & Cycle!

Tangerine Scream



1 9 3 3



©2010 HOT ROD CHASSIS & CYCLE