

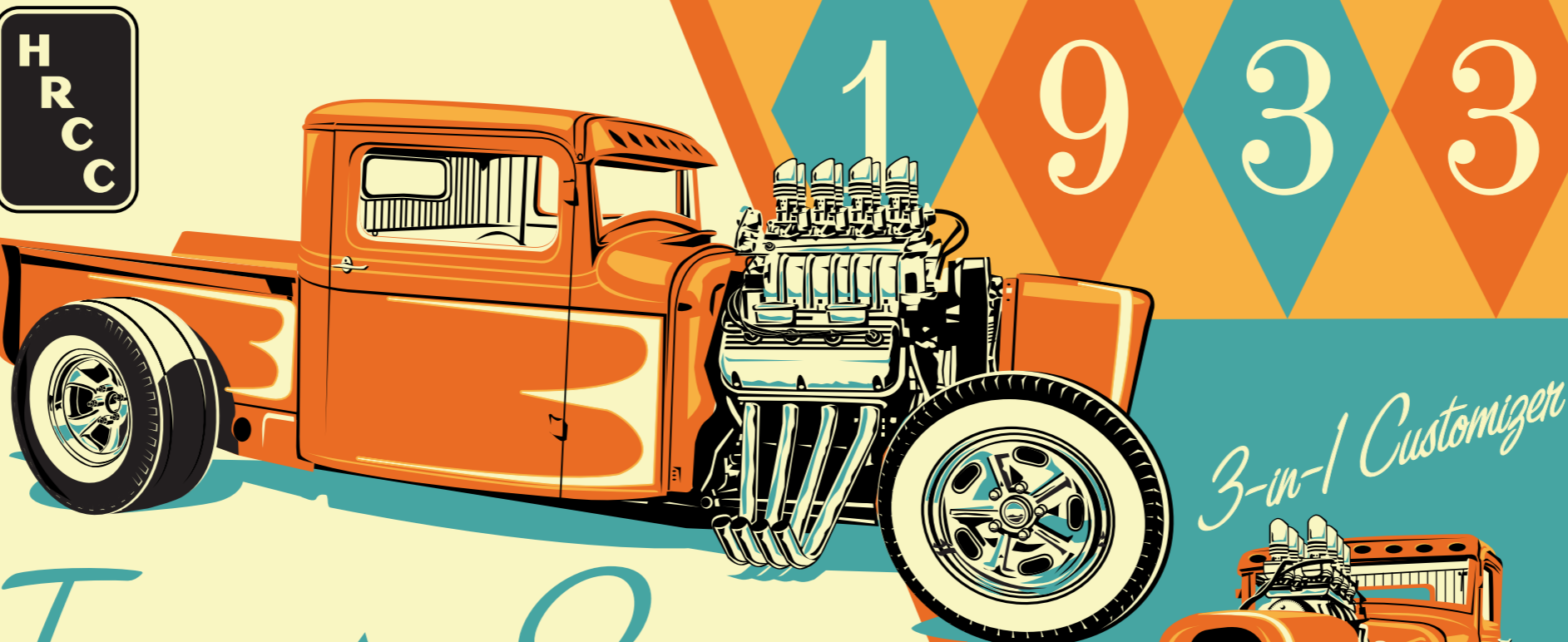
BLOWN HEMI! ♦ METALFLAKE PAINT! ♦ SHOW-ROD STYLING! ♦ 8 CARBS! ♦ WHITEWALL SLICKS!

Build Your Dream Truck!

Tangerine Scream



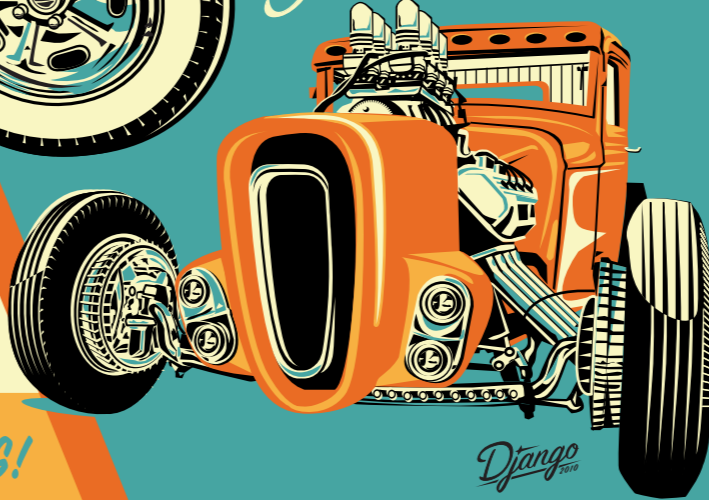
3-in-1 Customizer



1 9 3 3

Tangerine Scream

3-in-1 Customizer

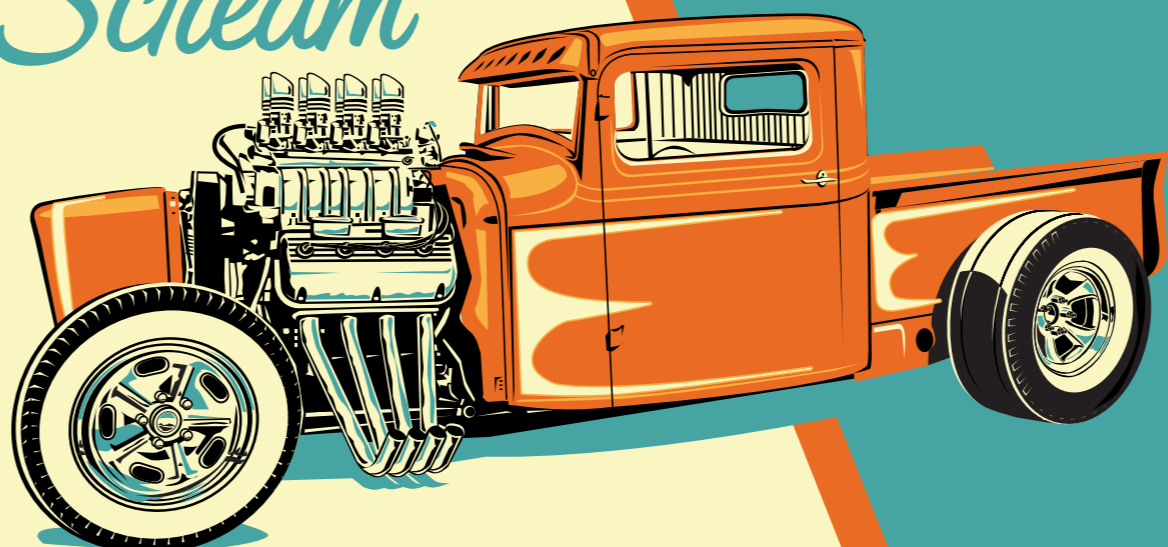


Dodge

BLOWN HEMI! ♦ METALFLAKE PAINT! ♦ SHOW-ROD STYLING!

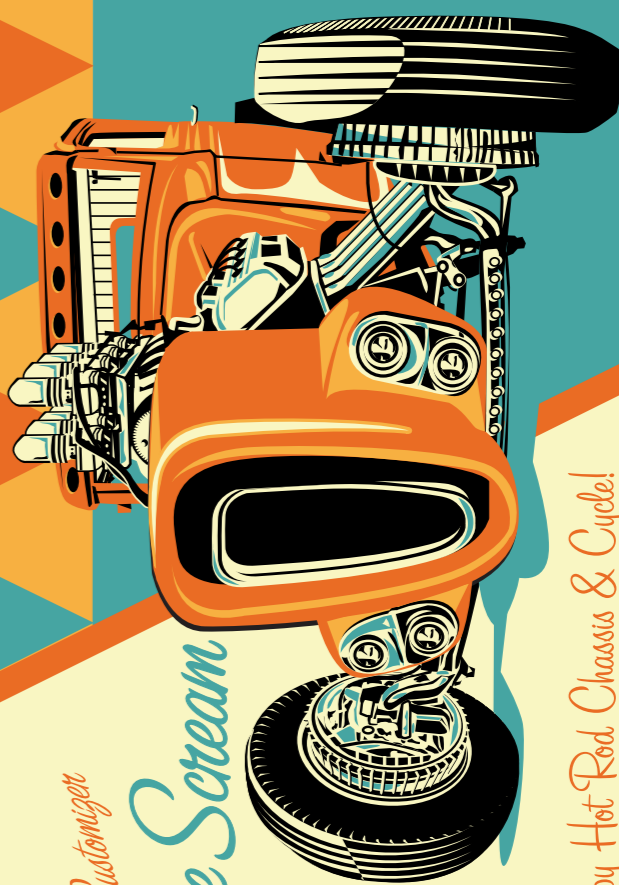
Tangerine Scream

3-in-1 Customizer



ENGINE: SUPERCHARGED CHRYSLER 392 HEMI
TRANSMISSION: TTC TKO 600 5-SPEED
REAR END: 9" REAR AXLE
FRONT SUSPENSION: 4" DROPPED & DRILLED I-BEAM
REAR SUSPENSION: HRCC
FRAME: HRCC FRAME
BODY MODIFICATIONS: HAND CRAFTED STEEL GRILLE SHELL, CHOPPED 5 INCHES, HAND CRAFTED TRUCK BED, 10.00-15 RADIR SLICKS, 5.60-15 COKER FIRESTONE PIE CRUSTS

BLOWN HEMI! ♦ METALFLAKE PAINT! ♦ SHOW-ROD STYLING! ♦ 8 CARBS! ♦ WHITEWALL SLICKS!



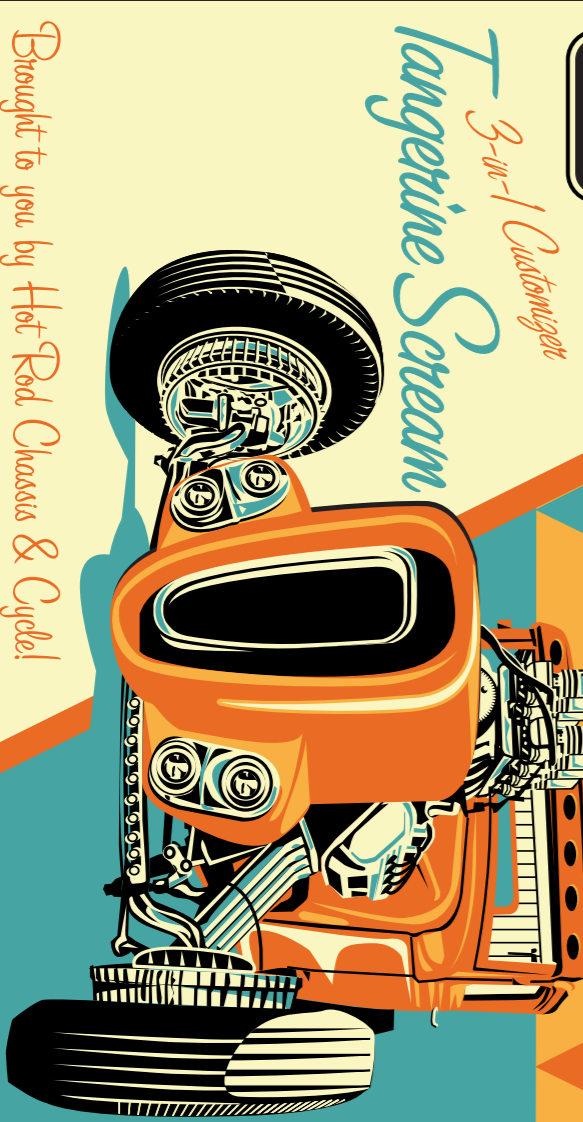
3 3 6 1

Tangerine Scream

3-in-1 Customizer



Brought to you by Hot Rod Chassis & Cycle!



Tangerine Scream

1 9 3 3

Brought to you by Hot Rod Chassis & Cycle!

©2010 HOT ROD CHASSIS & CYCLE

HOT ROD CHASSIS & CYCLE



- TRADITIONAL HOT RODS
- '50'S ERA BOBBERS
- TRADITIONAL CUSTOMS
- DRAGSTERS
- CUSTOM SHEETMETAL WORK
- CUSTOM FABRICATION

IF YOU CAN DREAM IT, WE CAN BUILD IT.

WWW.HOTRODCHASSISANDCYCLE.COM 630.458.0808

59 FACTORY ROAD, ADDISON, IL 60101